

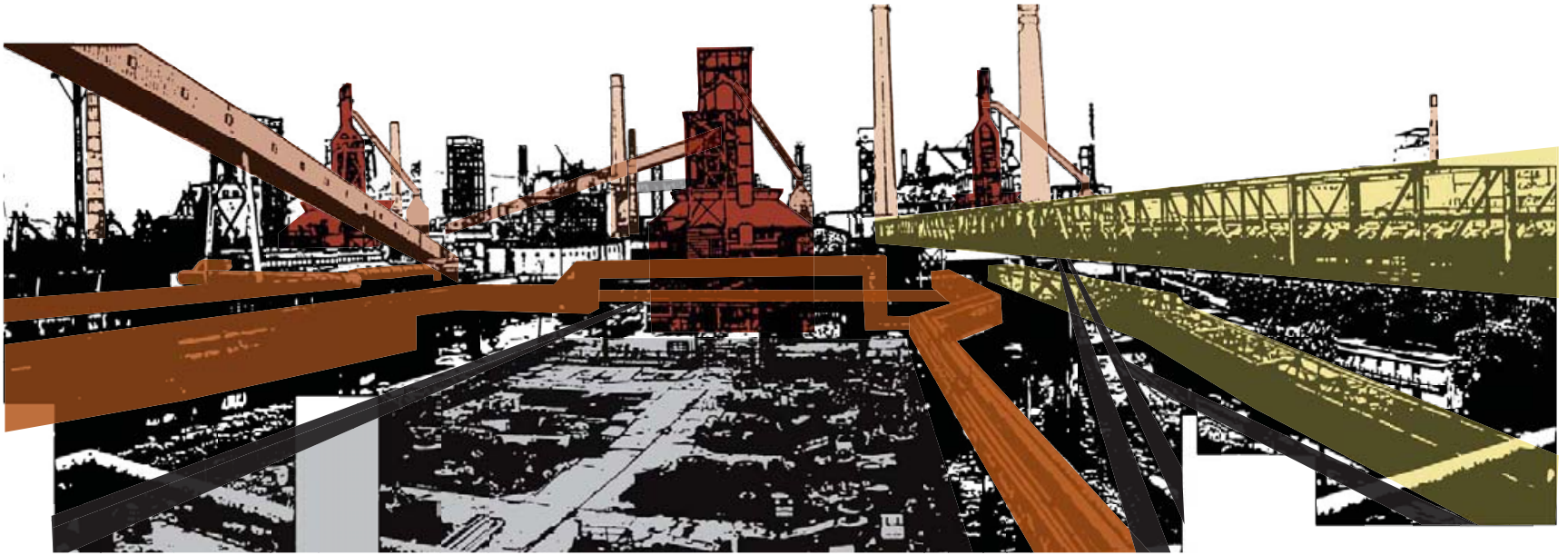
MIT OpenCourseWare

<http://ocw.mit.edu>

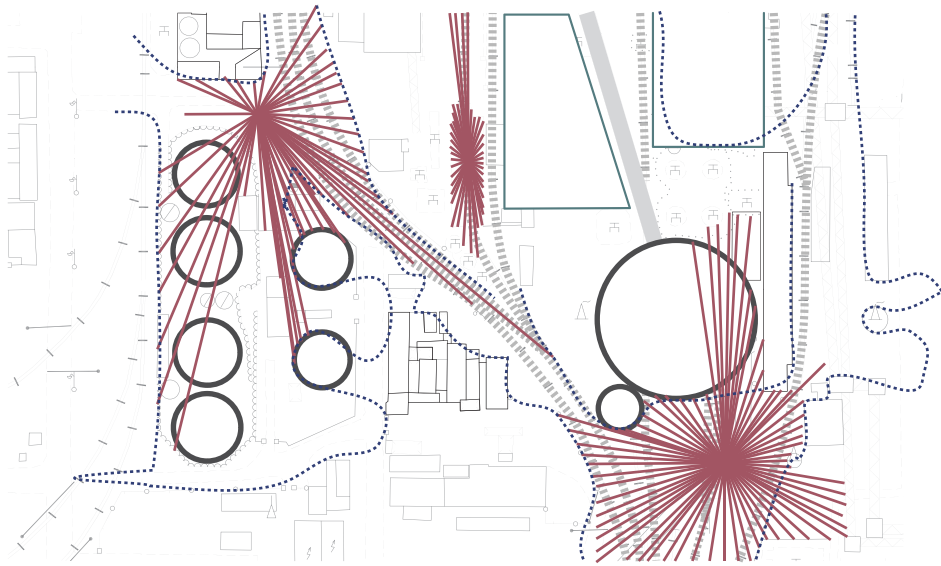
11.307 Beijing Urban Design Studio

Summer 2008

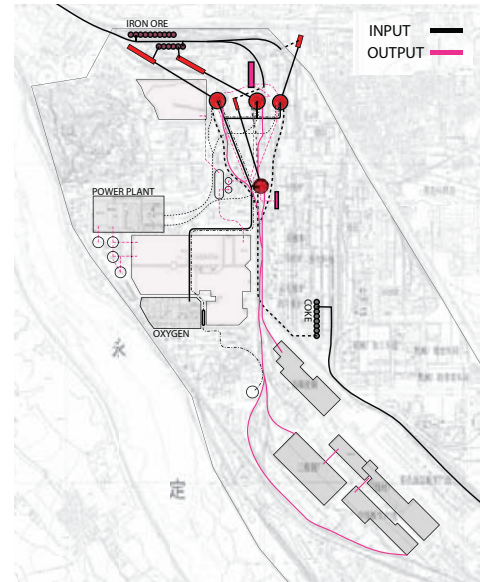
For information about citing these materials or our Terms of Use, visit: <http://ocw.mit.edu/terms>.



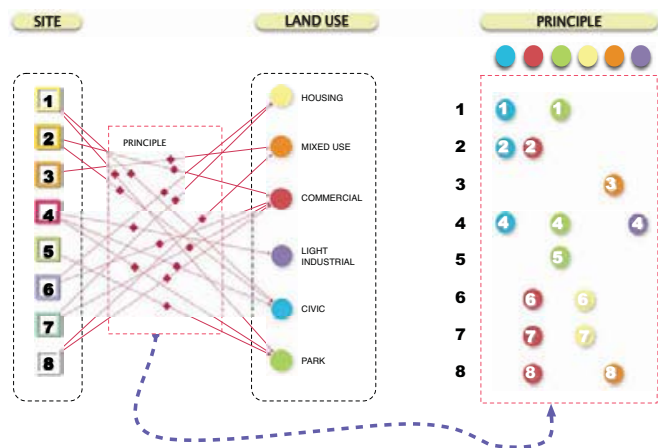
network as structure and object near furnace 4
 场地上的一切形成关联的各种网络，我们将之视为不可分的整体



dynamic sight lines
 动态视线分析图



old industrial network
 原有工业网络示意

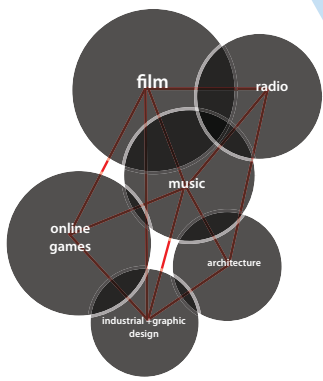
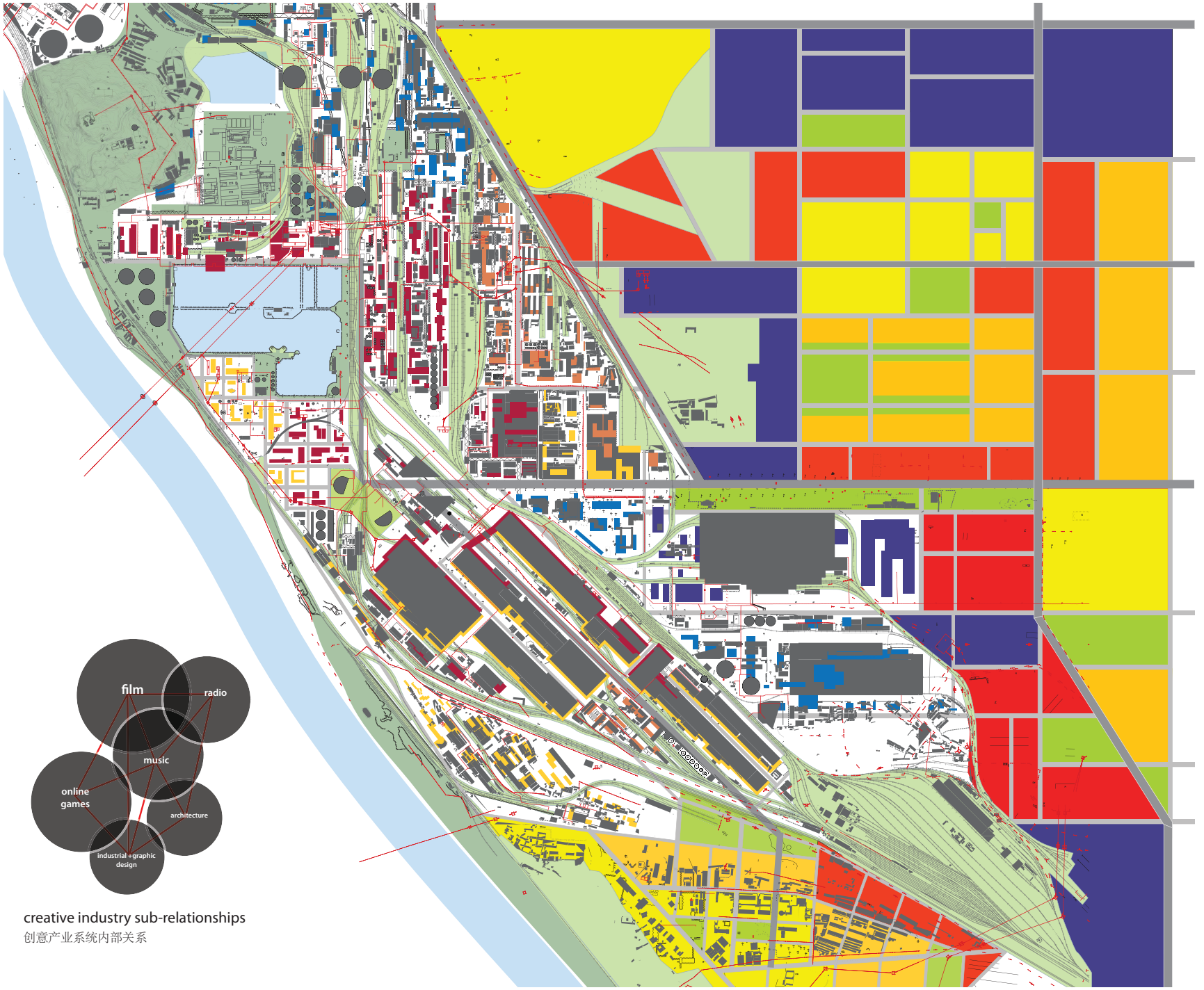


creative industry exchange
 创意产业全球化迁移

	1	2	3	4	5	6	7	8
network	管道 pipes	传送带 conveyor belt	铁路 railway					
building	建筑密度 building density	建筑高度 building height	建筑层数 storey	建筑状态 building condition	开放空间 open space			
other	绿化 plant							

	more		less
管道 pipes	more		less
传送带 conveyor belt	more		less
铁路 railway	more		less
建筑密度 building density	high		low
建筑高度 building height	high		low
建筑层数 storey	>=7	5~6	2~3
建筑状态 building condition	better		worse
开放空间 open space	large		small
绿化率 plant	high		low





creative industry sub-relationships
创意产业系统内部关系

land use integrated into existing fabric
现状肌理与用地性质

50m 100m 250m 500m



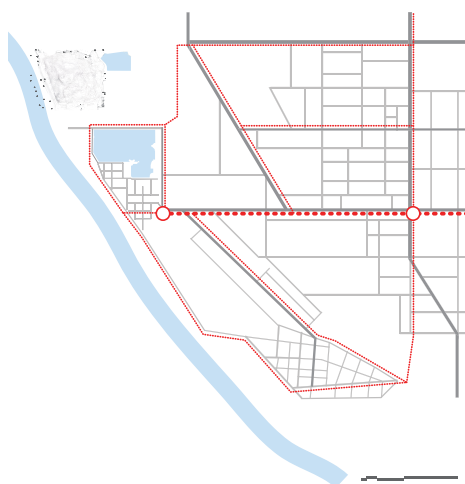
land area by use 用地图例



built square meters by use 个性质地中建筑面积总比例



open space framework 开放空间结构示意图



road + transit network 路网结构与交通系统



land use 用地性质

网络化保护 NETWORKED PRESERVATION

MIT SINGHUA BEIJING URBAN DESIGN STUDIO
eskinazi victor | kaminski-coughlin ian | ming ye | pandit ninad | yang song