

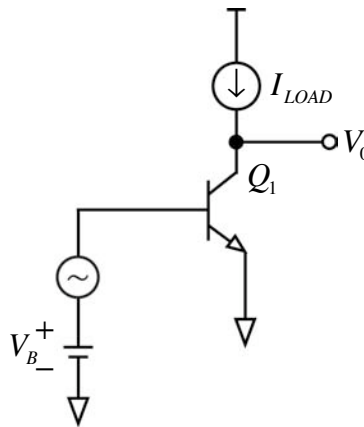
## 6.301 Solid-State Circuits

Recitation 13: Current Sources and Current Mirrors

Prof. Joel L. Dawson

---

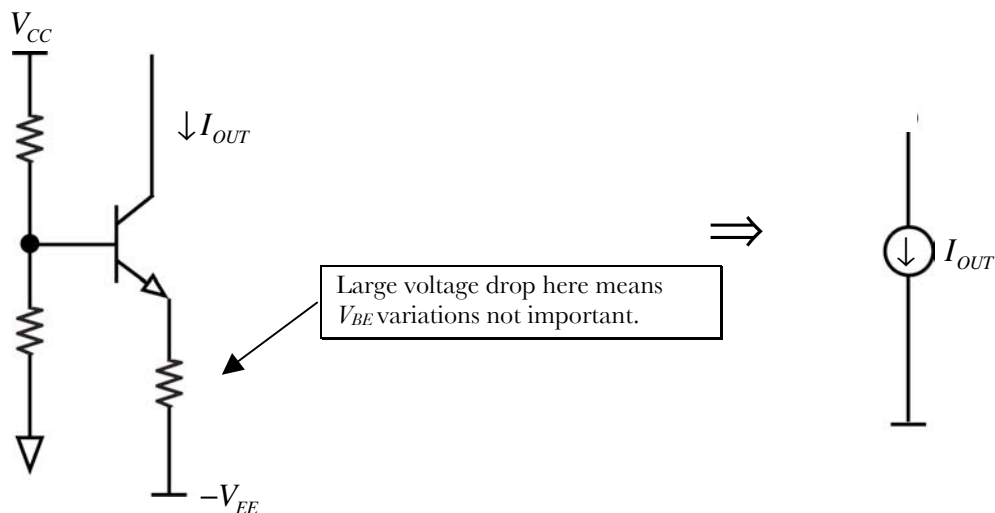
Many times in complex analog systems, it is useful to have a current source. Consider our “active loading” concept from the last recitation:



Remember we speculated that if we could make the collector current of  $Q_1$  match  $I_{LOAD}$ , this might be a way to get a very high gain stage. Infinite gain, even, were it not for base width modulation.

Now we know that transistors themselves make very good dependent current sources. This suggests their use as good independent current sources, provided that we fix the base-emitter voltage in some sensible way.

One sensible way that we looked at as follows:



## 6.301 Solid-State Circuits

Recitation 13: Current Sources and Current Mirrors

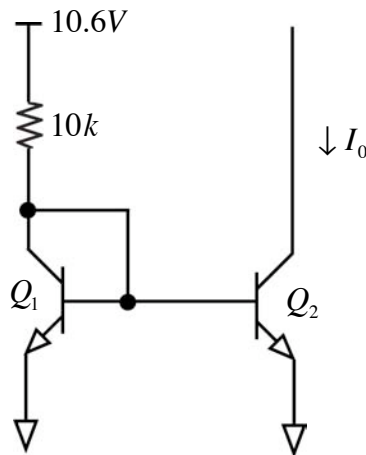
Prof. Joel L. Dawson

---

This is a fine idea when you have a lot of voltage headroom. Today we're going to look at alternatives, though, that often prove to be more useful.

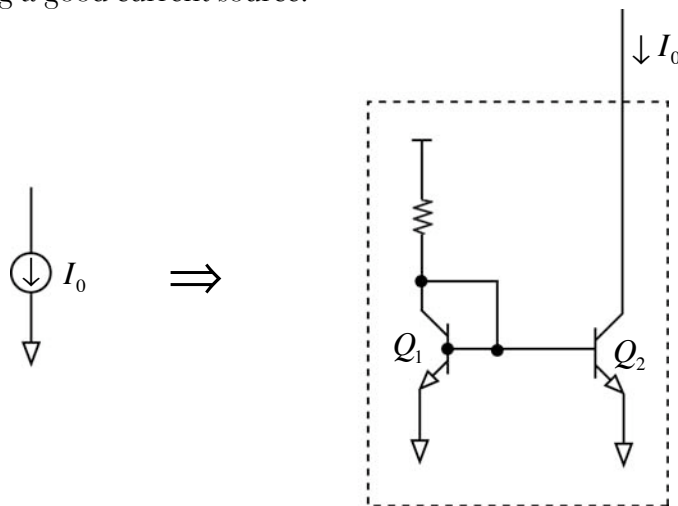
### CLASS EXERCISE

Compute  $I_0$  for the following circuit:



(Workspace)

And just like that, we discover the current mirror. It's a basic analog building block, and is one way that we have for building a good current source:

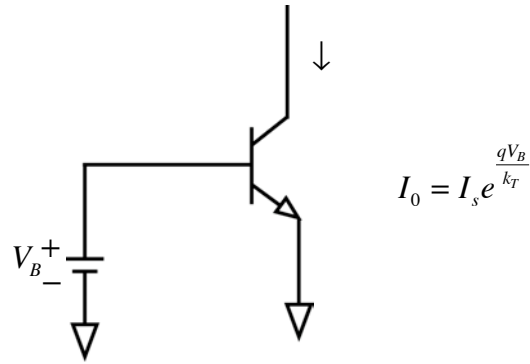


## 6.301 Solid-State Circuits

Recitation 13: Current Sources and Current Mirrors

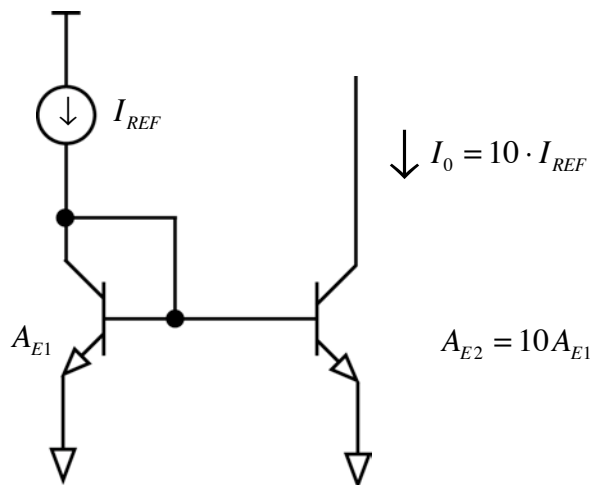
Prof. Joel L. Dawson

Notice how this technique solves a thorny problem for using transistors as a current source. We've always avoided doing things like:



Because of the uncertainty in  $I_s$ . But if  $Q_1$  and  $Q_2$  are matched, we don't care what the exact value of  $I_s$  is. We establish a reference current using the power supply and  $Q_1$ , and use the nonlinearity of the  $I_1 - V_{BE1}$  relationship to “undo” the nonlinearity of the  $V_{BE2} - I_2$  relationship. In other words,  $I_{C1}$  gets mirrored into the collector of  $I_{C2}$ .

Remember that  $I_s = A_E \cdot \left( \frac{qD_n n_i^2}{W_B N_B} \right)$ , where  $A_E$  is the emitter area. Accordingly, we can get some variety in our current mirrors by sizing the transistors differently:



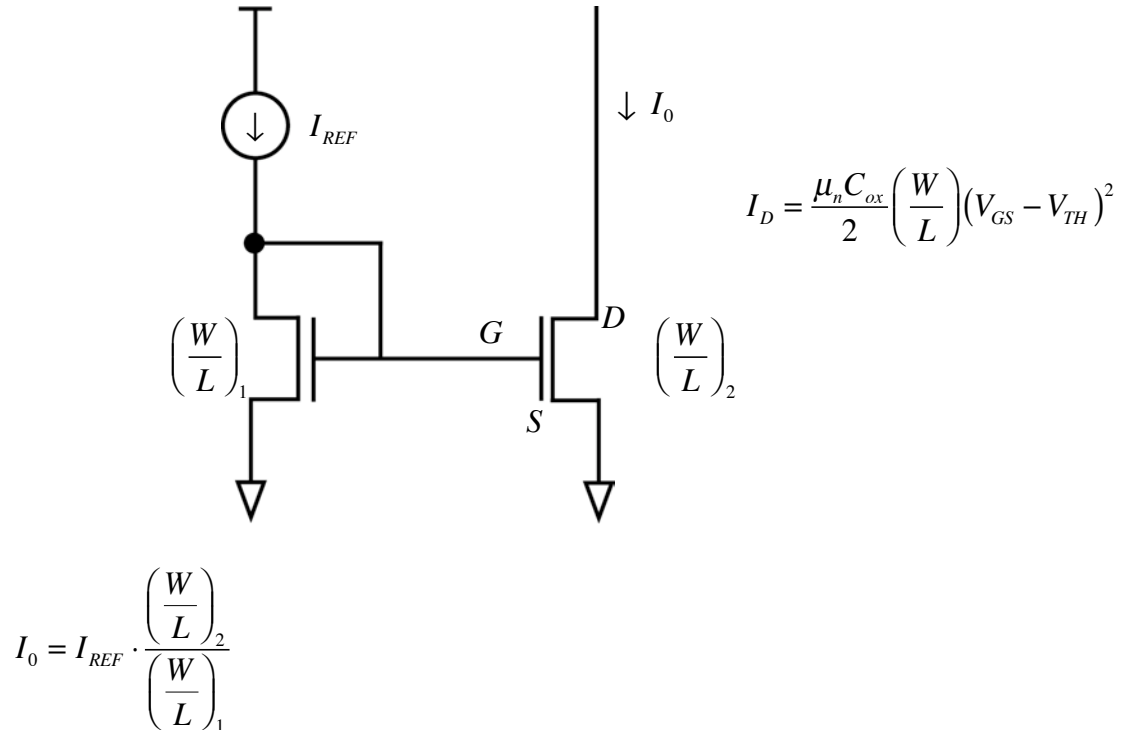
## 6.301 Solid-State Circuits

Recitation 13: Current Sources and Current Mirrors

Prof. Joel L. Dawson

---

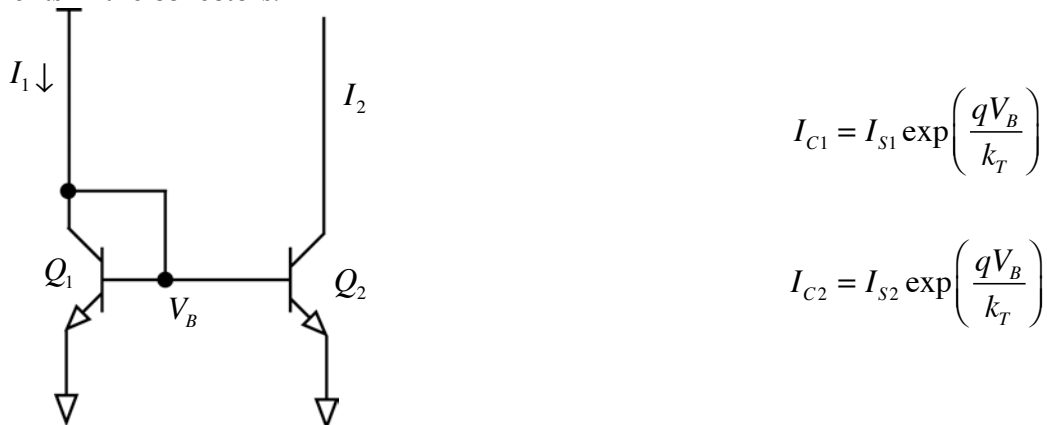
This idea of using matched devices also comes in MOSFET flavors:



---

### Matching

Now we agreed that if the devices in a bipolar current mirror are matched, we have close to identical currents in the collectors.



## 6.301 Solid-State Circuits

Recitation 13: Current Sources and Current Mirrors

Prof. Joel L. Dawson

---

We can conclude that for matching, we have:

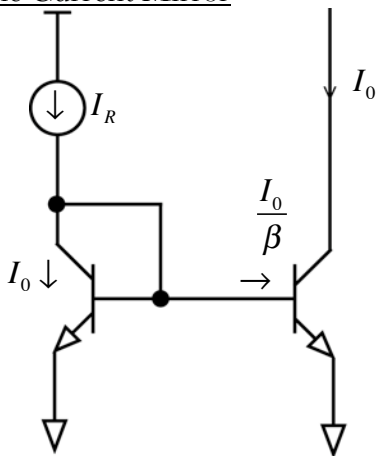
$$I_{C1} - I_{C2} = (I_{S1} - I_{S2}) \exp\left(\frac{qV_B}{kT}\right)$$

$$\frac{\Delta I_C}{I_C} = \frac{\Delta I_S}{I_S}$$

---

Some common current mirrors:

Simple Current Mirror



$$KCL: I_R = I_0 + \frac{2I_0}{\beta} = I_0 \left(1 + \frac{2}{\beta}\right) = I_0 \left(\frac{\beta + 2}{\beta}\right)$$

$$I_0 = I_R \left(\frac{\beta}{\beta + 2}\right)$$

We calculate the error according to  $I_0 = \frac{I_R}{1 + \frac{2}{\beta}}$

$$Error = \frac{2}{\beta}$$

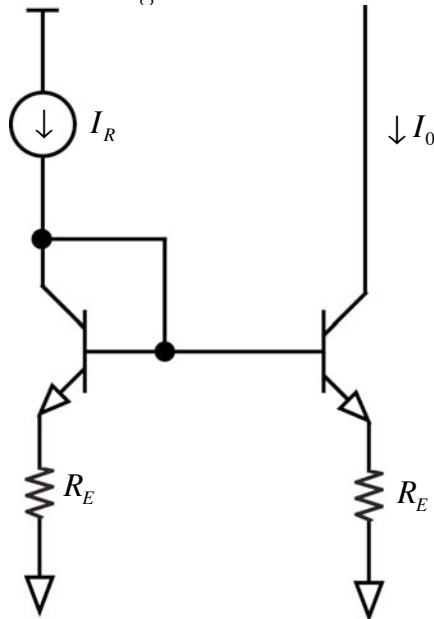
$$R_0 = r_0 \quad [Output \ impedance]$$

## 6.301 Solid-State Circuits

Recitation 13: Current Sources and Current Mirrors

Prof. Joel L. Dawson

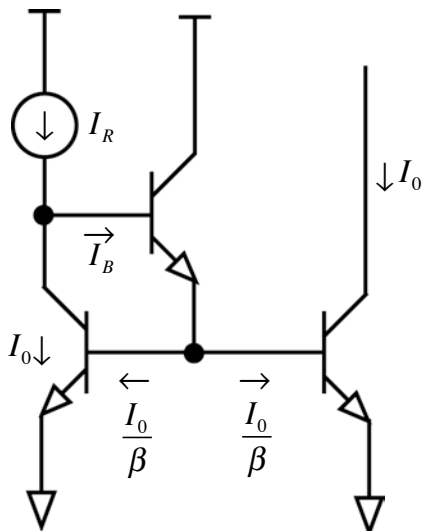
Can prevent thermal runaway, boost output impedance, and reduce sensitivity to matching by using emitter degeneration:



$$Error = \frac{2}{\beta}$$

$$R_0 \approx r_{\pi} \parallel R_E + (1 + g_m (r_{\pi} \parallel R_E)) r_0$$

### Buffered Current Mirror



$$I_B = \frac{2I_0}{(\beta+1)\beta}$$

$$I_R = I_0 + \frac{2I_0}{\beta(\beta+1)}$$

$$I_0 = \frac{I_R}{1 + \frac{2}{\beta(\beta+1)}}$$

$$Error = \frac{2}{\beta(\beta+1)} \approx \frac{2}{\beta^2}$$

$$R_0 = r_0$$

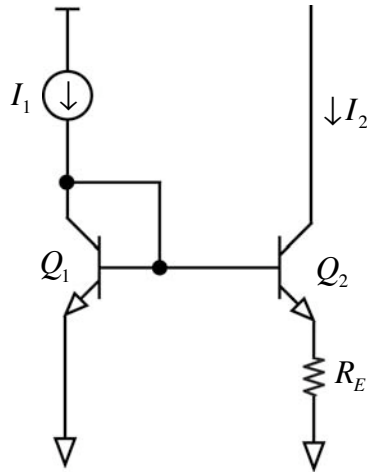
## 6.301 Solid-State Circuits

Recitation 13: Current Sources and Current Mirrors

Prof. Joel L. Dawson

---

Widlar Current Mirror (How to get very small output currents)



$$KVL : V_{BE1} = V_{BE2} + I_2 R_E$$

$$V_T \ln\left(\frac{I_1}{I_S}\right) = V_T \ln\left(\frac{I_2}{I_S}\right) + I_2 R_E$$

$$V_T \ln\left(\frac{I_1}{I_2}\right) = I_2 R_E$$

So if, for instance, we wanted  $I_1 = 1\text{mA}$  and  $I_2 = 1\mu\text{A}$  :

$$V_T \ln\left(\frac{10^{-3}\text{A}}{10^{-6}\text{A}}\right) = V_T \ln(1000) = 180\text{mV}$$

$$I_2 R_E = 180\text{mV}$$

$$R_E = \frac{180\text{mV}}{1\mu\text{A}} = 180\text{k}\Omega$$

The output impedance of this mirror is

$$r_0 \approx r_{\pi 2} \parallel r_E + \left(1 + g_{m2} (r_{\pi 2} \parallel R_E)\right) r_{o2}$$

MIT OpenCourseWare  
<http://ocw.mit.edu>

6.301 Solid-State Circuits  
Fall 2010

For information about citing these materials or our Terms of Use, visit: <http://ocw.mit.edu/terms>.