

Mapping Detroit - Marie Law



1916



1950



1960



1994



2014



2024



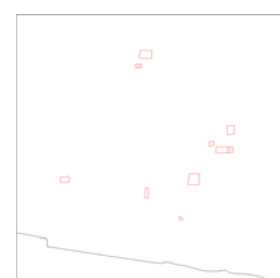
2034



2044



2054



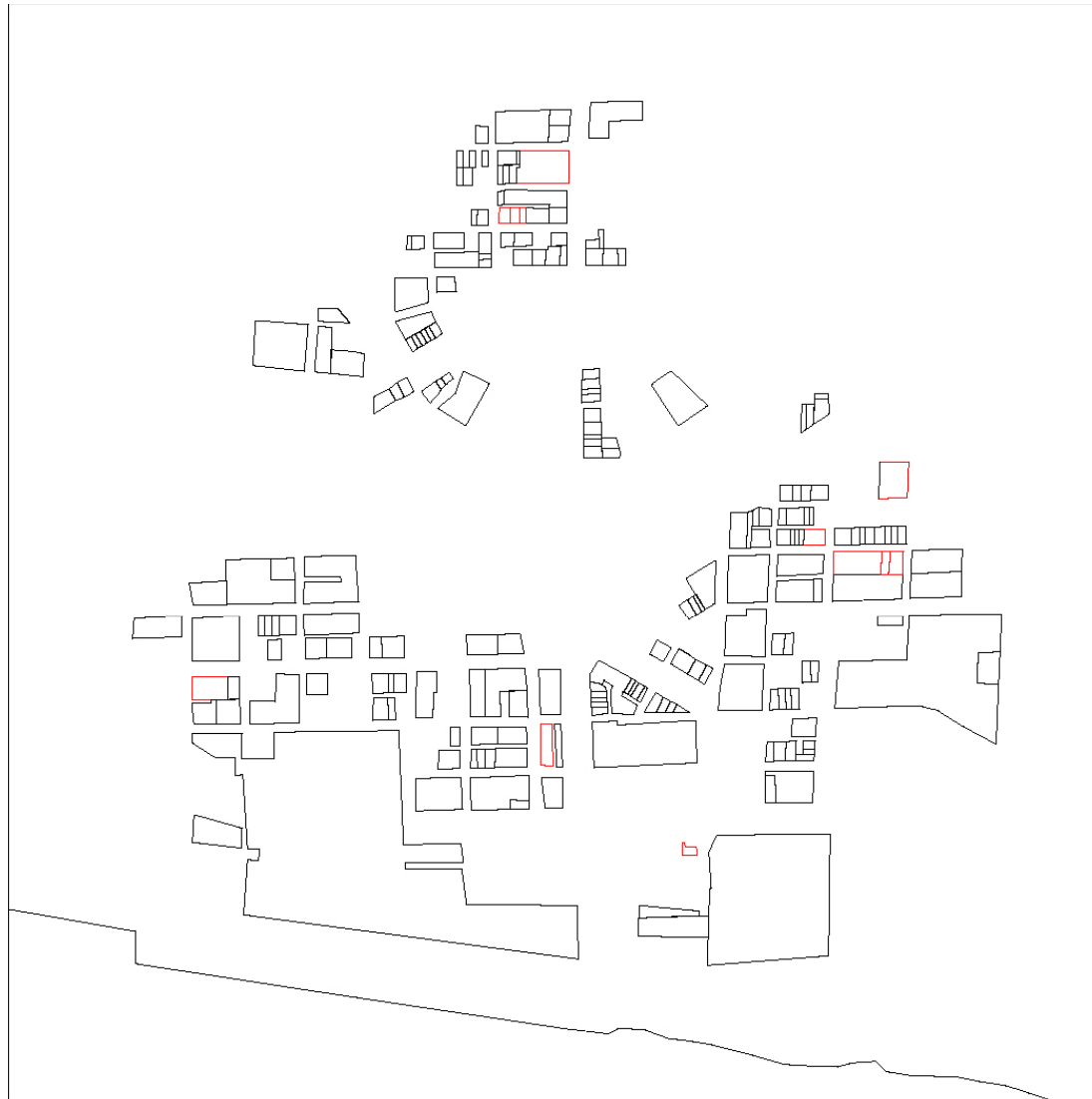
2064



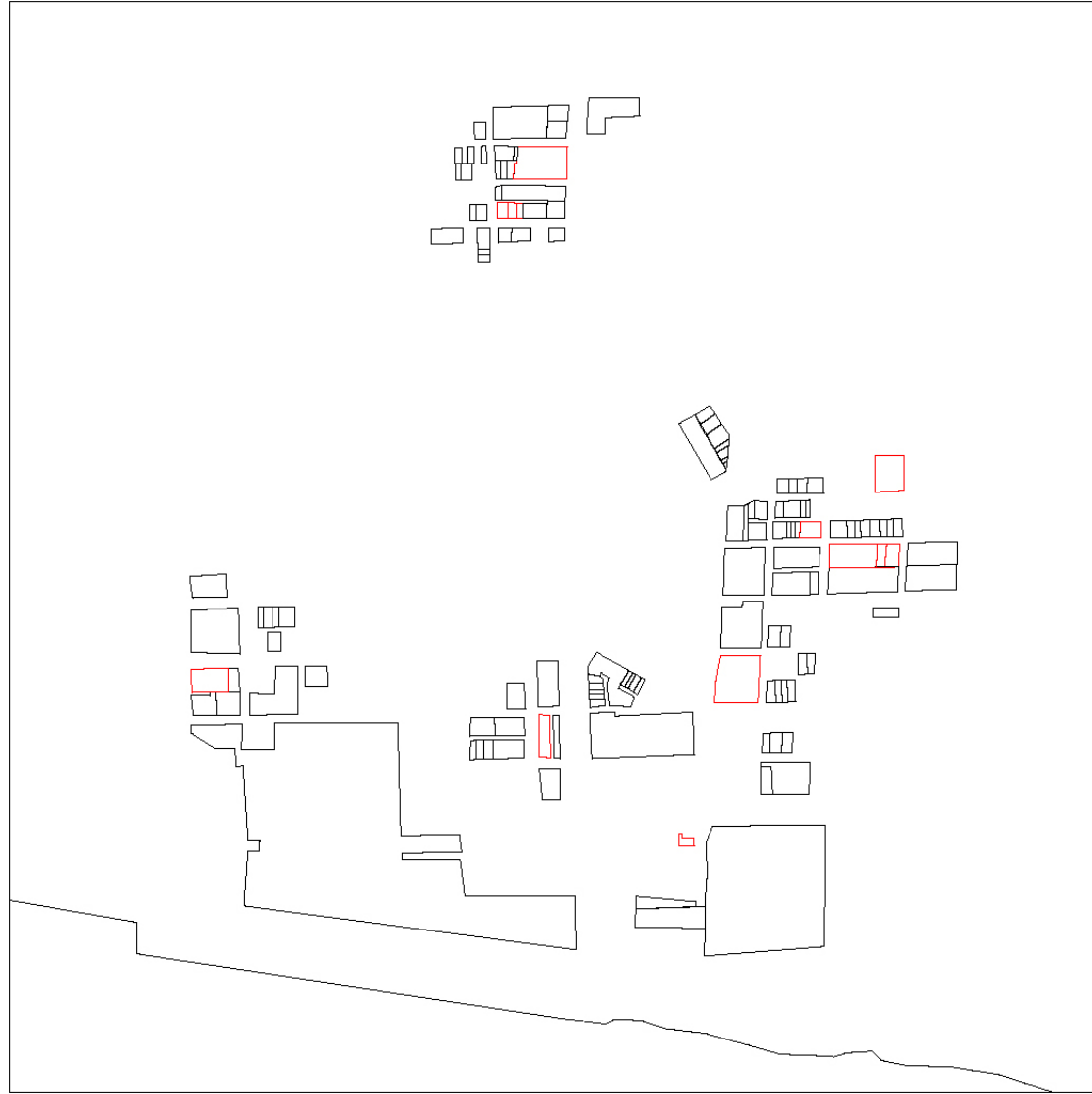
2014



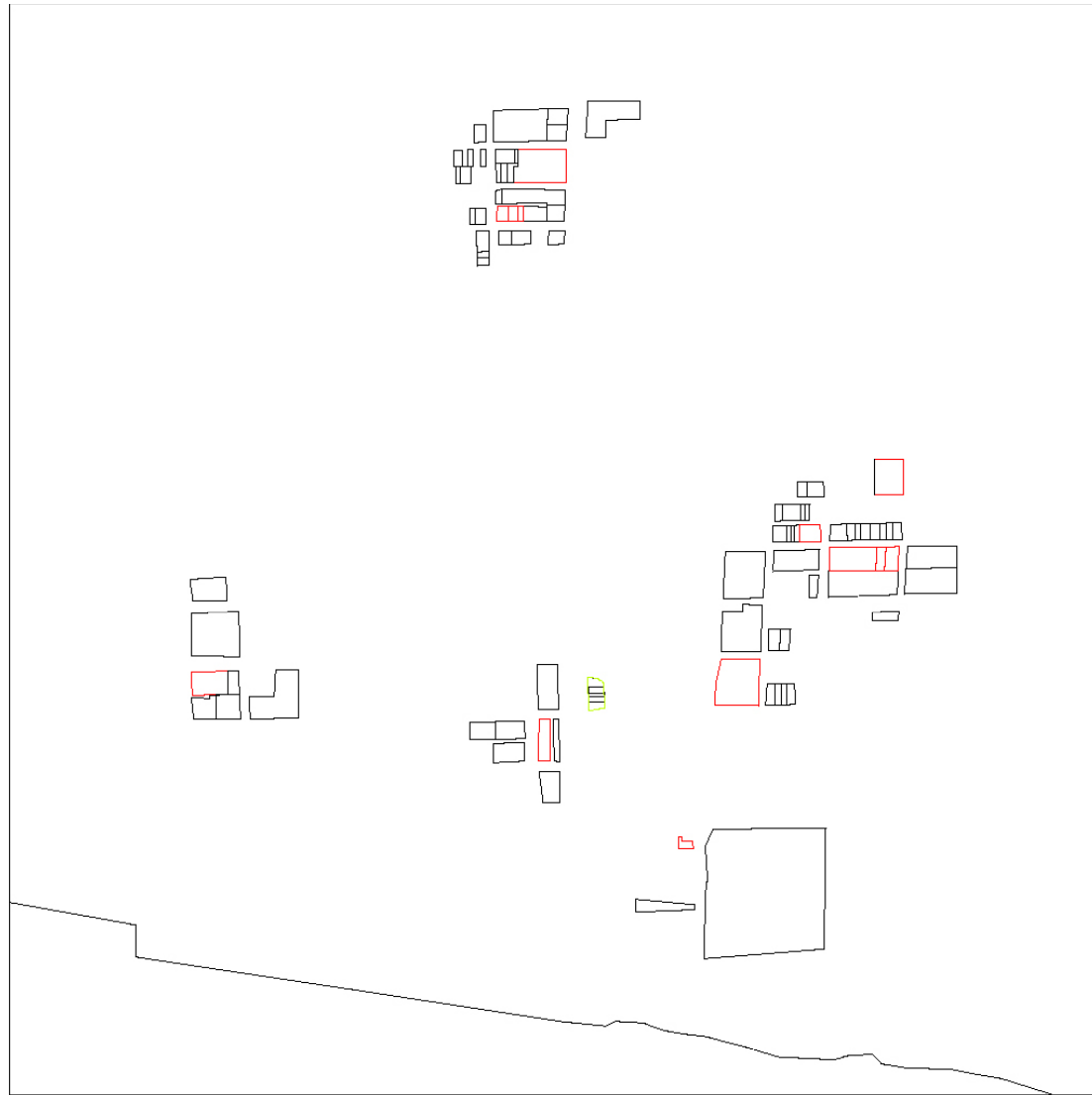
2024



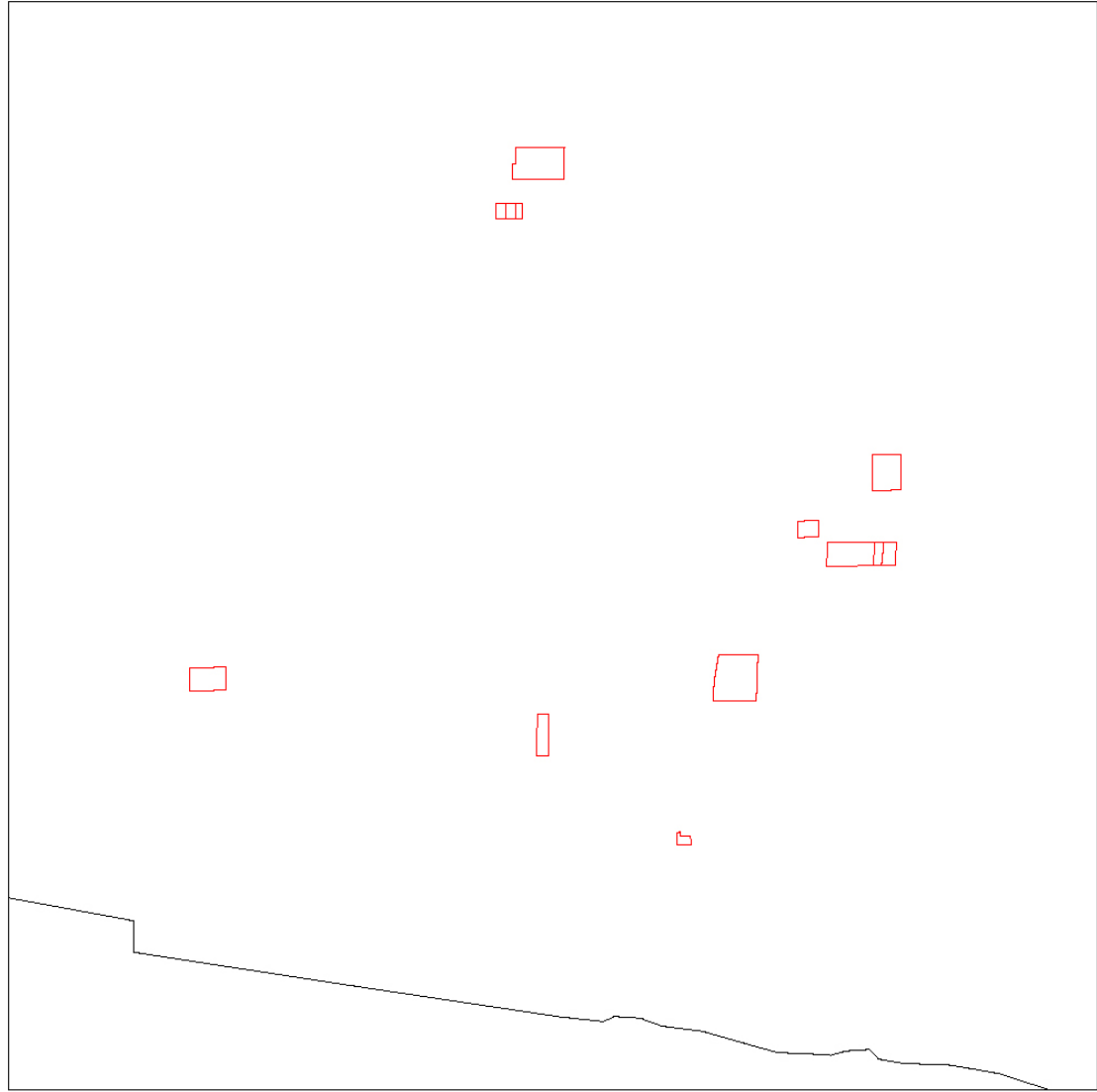
2034



2044



2054



2064



Fox Theater



Elwood Bar



Women's City Club



Second Baptist Church



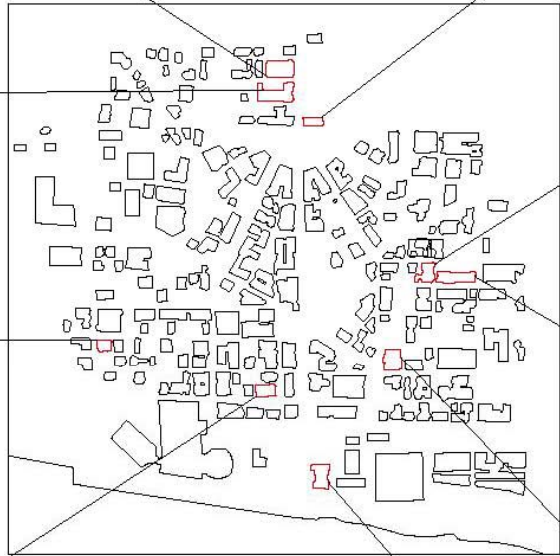
Fort Presbyterian Church



Greektown



Guardian Building



1998



Wayne County Court House



Mariner's Church





















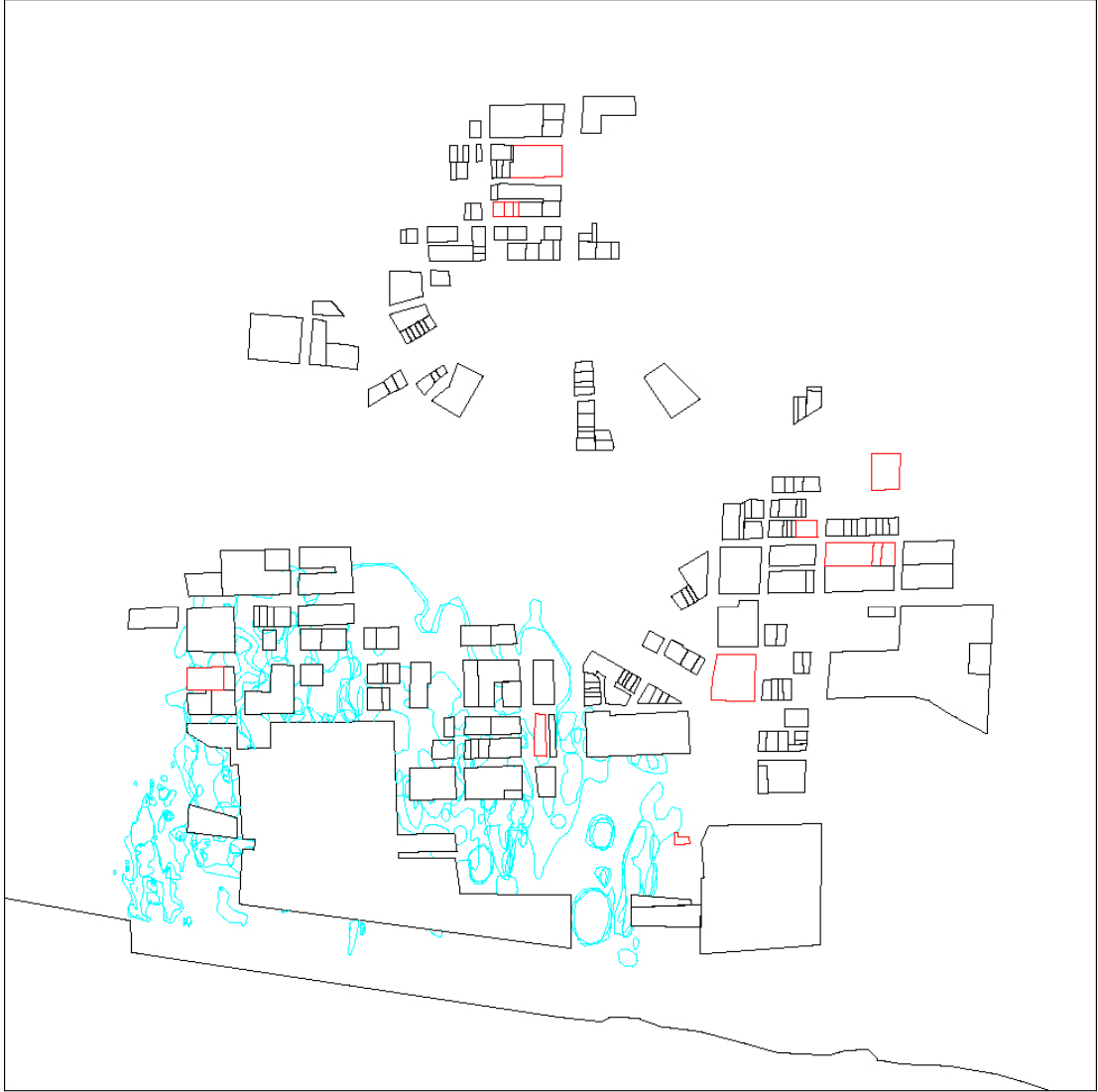




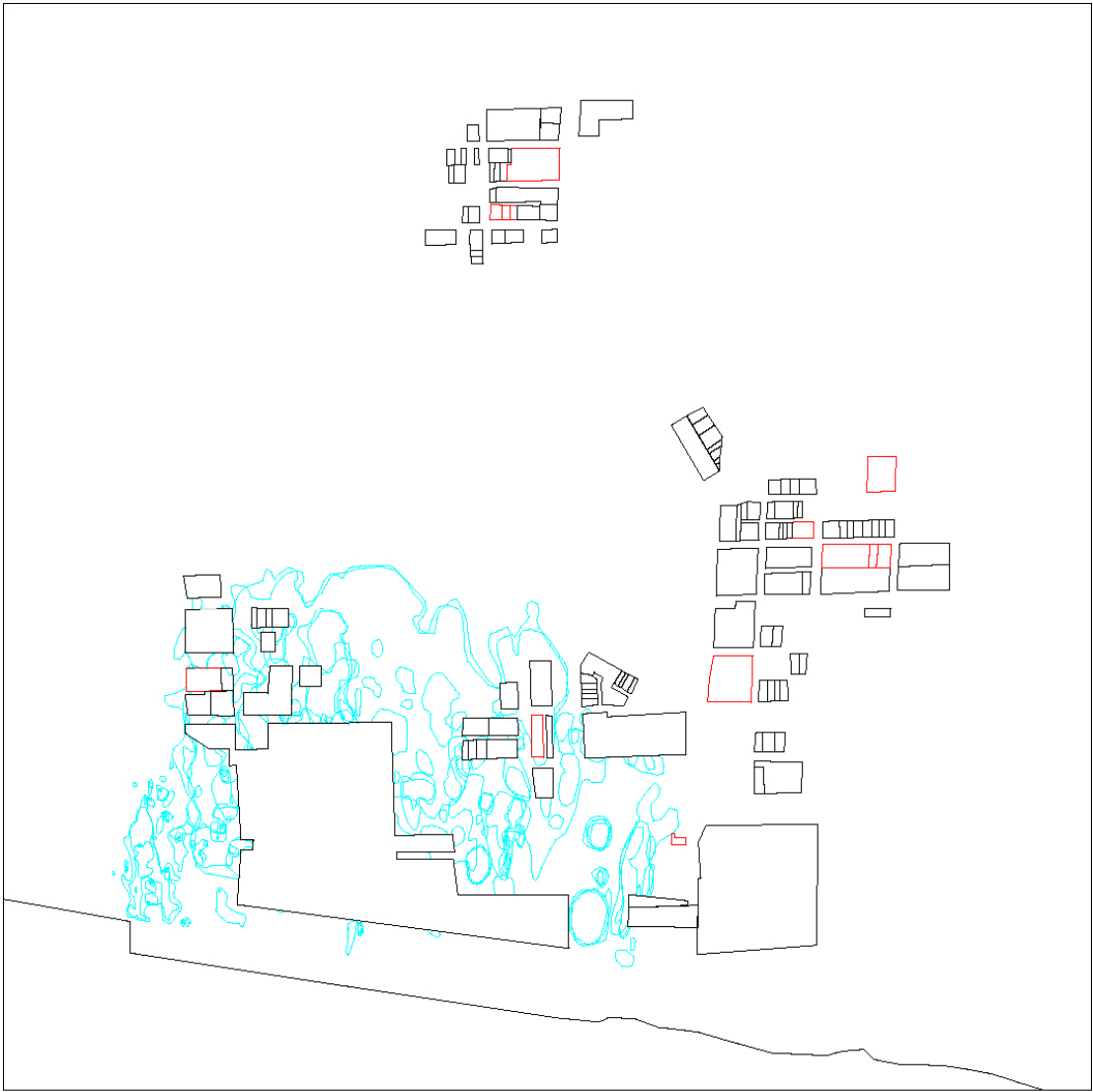
2014



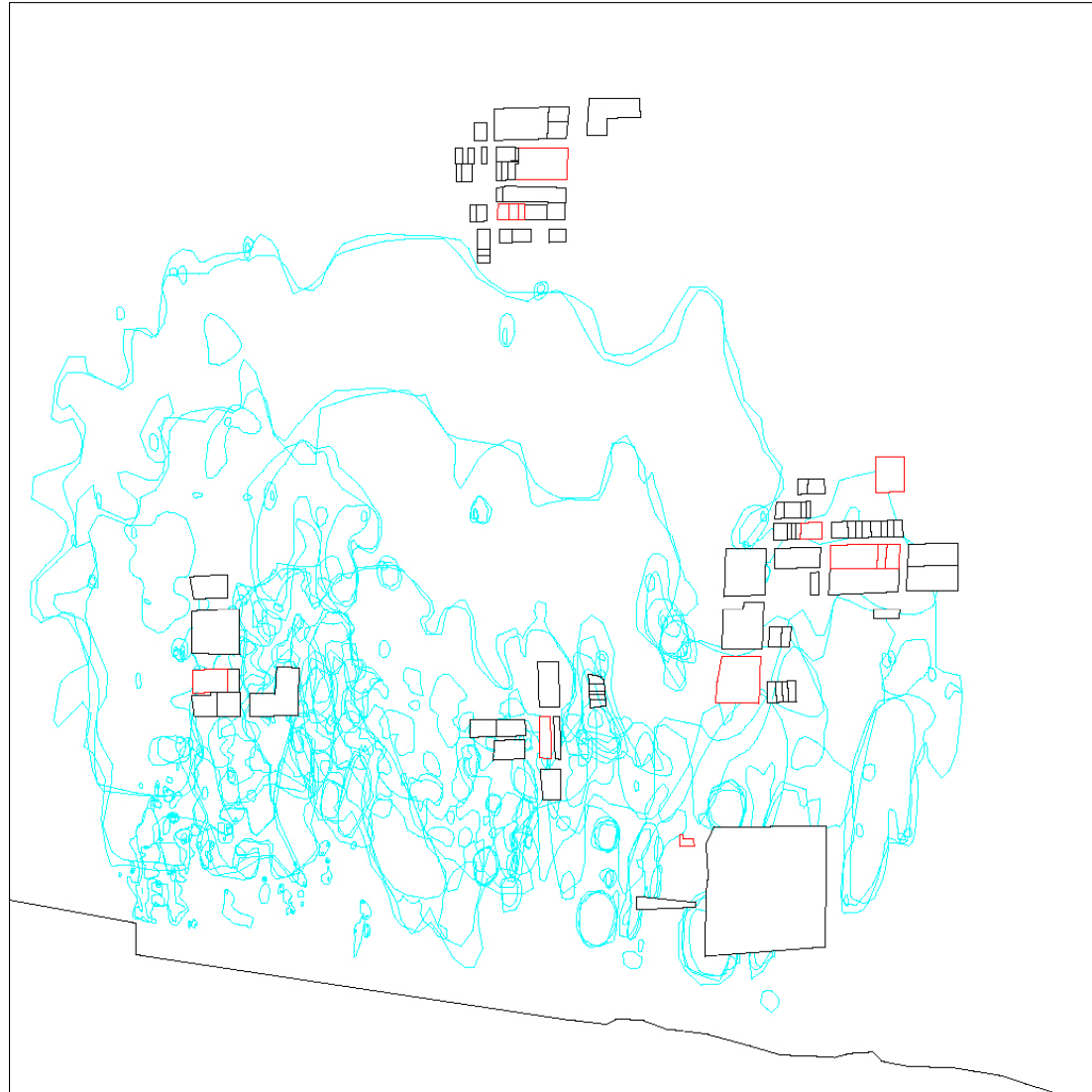
2024



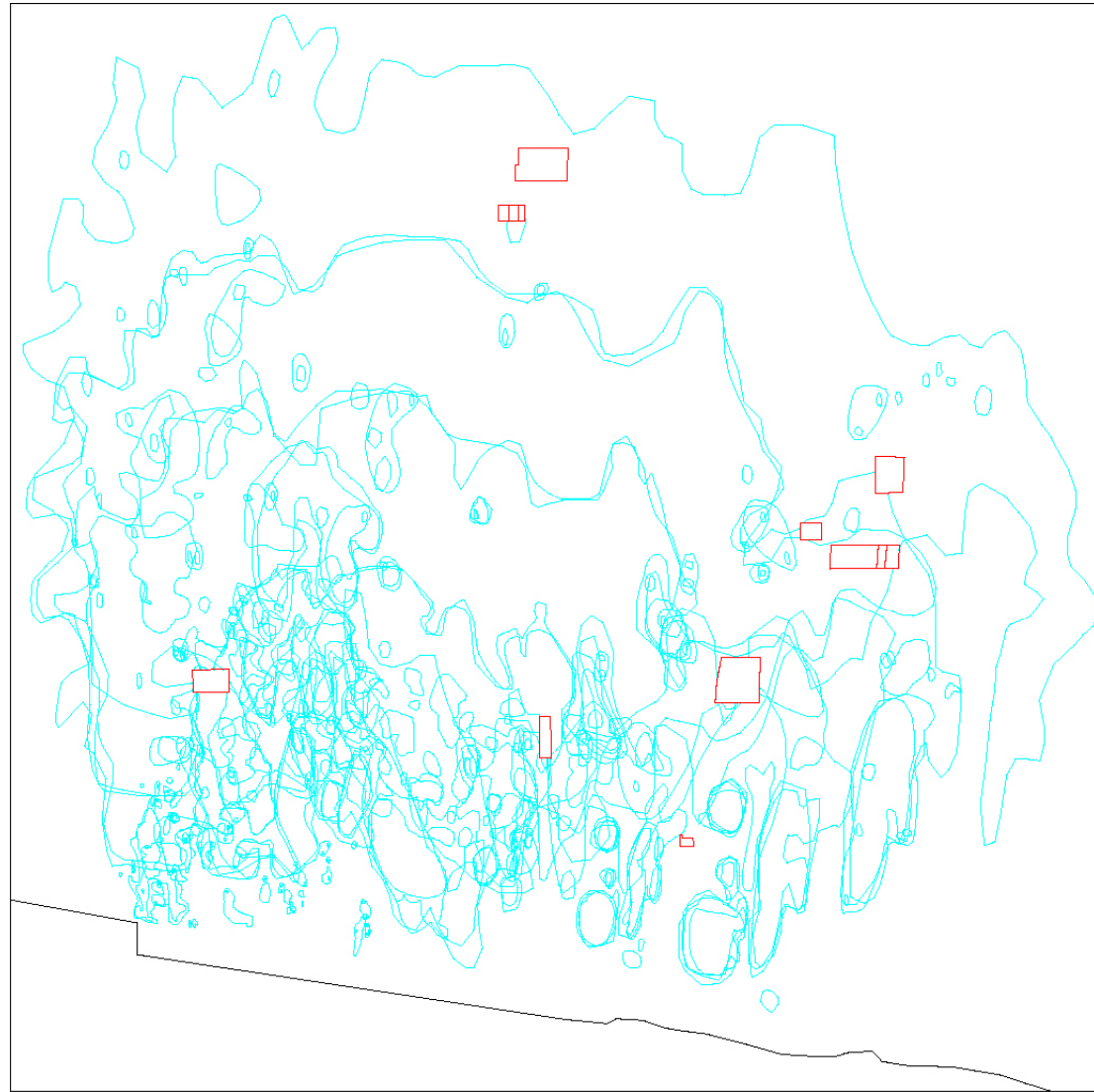
2034



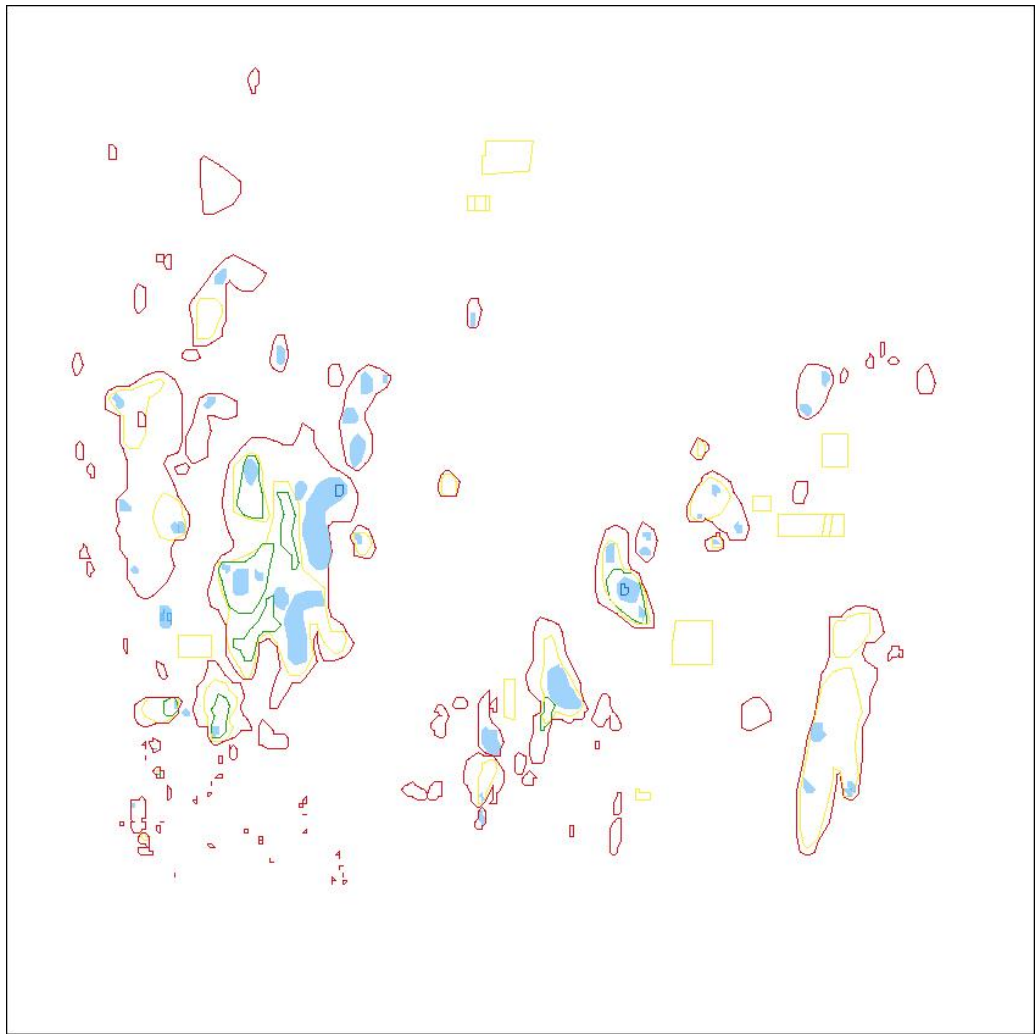
2044



2054

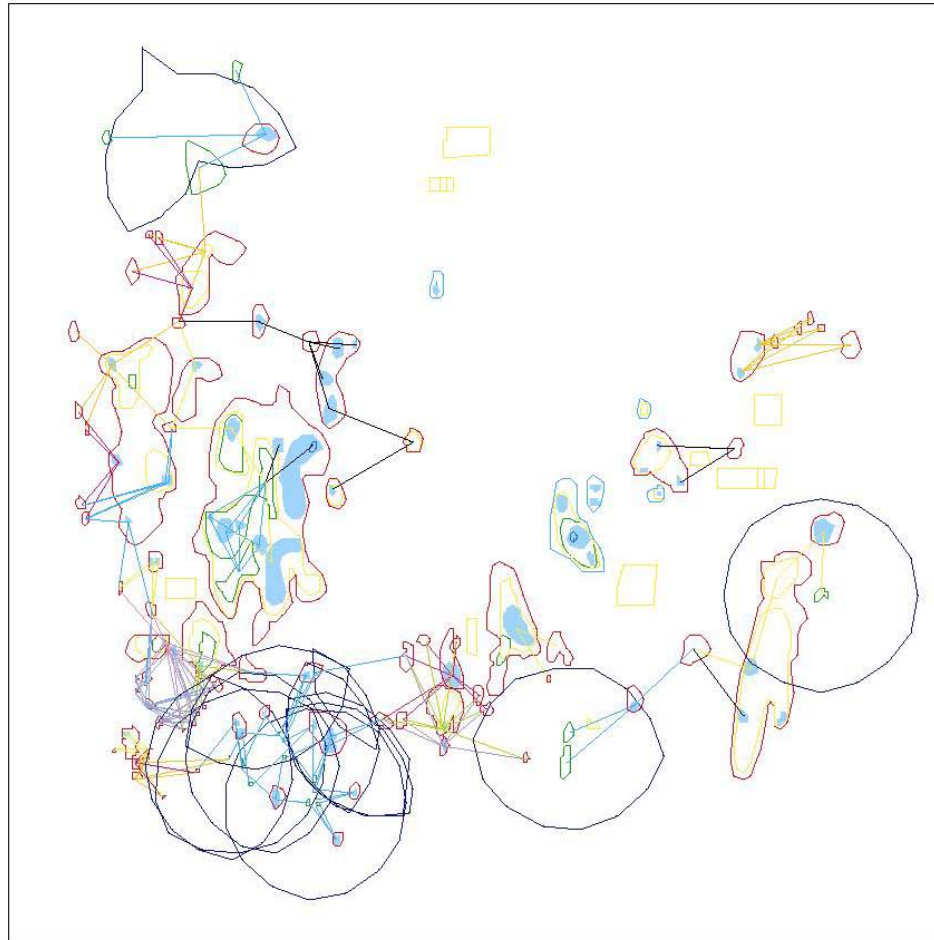


2064




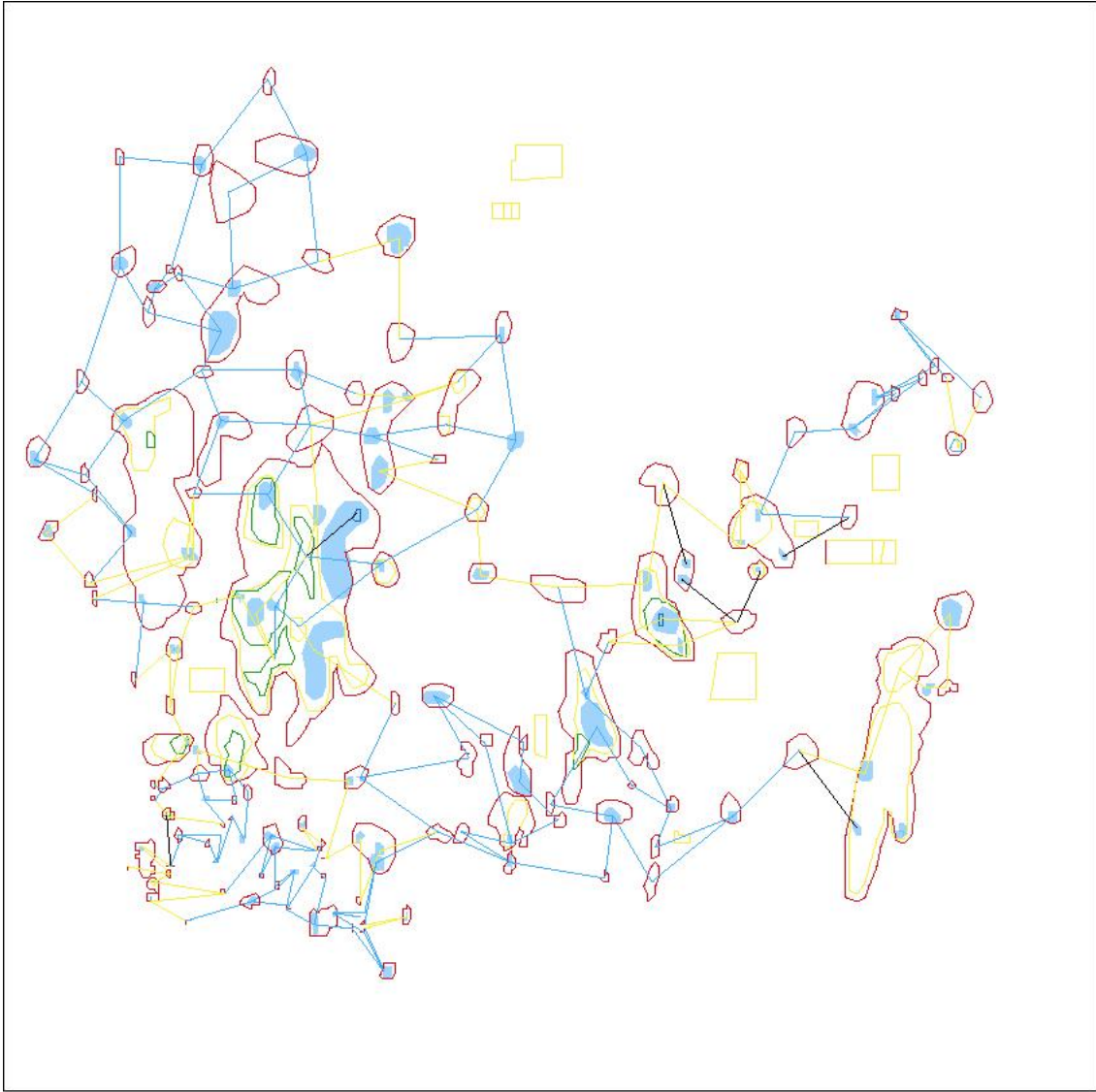
Location of "basins" from contours
Year: 2064
: water

1. The United Nations recommends that all inhabitations are to be located within 600 feet of a clean water source.-

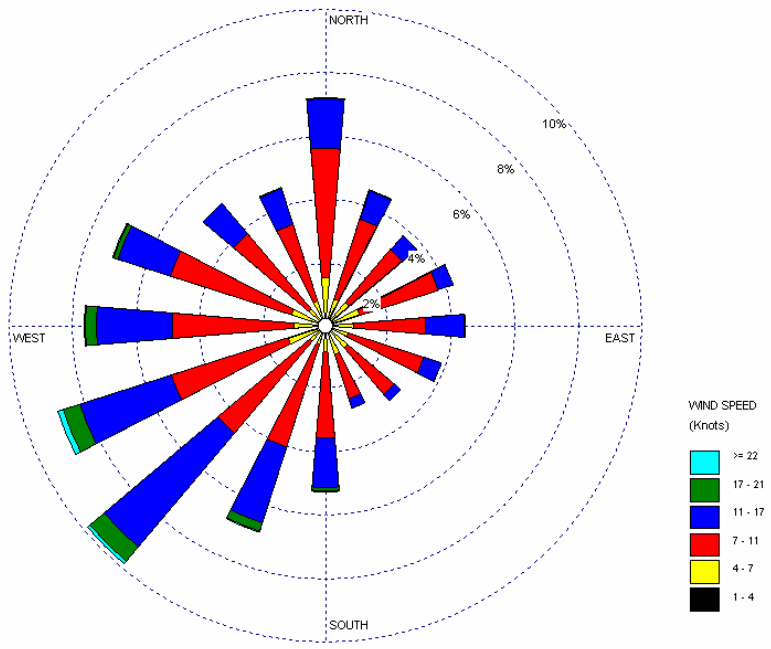


- All potential connections between basins and water sources

 : Ranges for necessary additional water sources

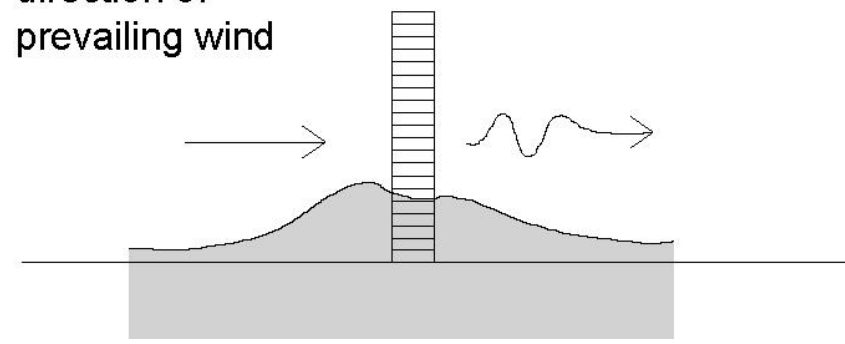


- Basins and resulting relationships to water sources

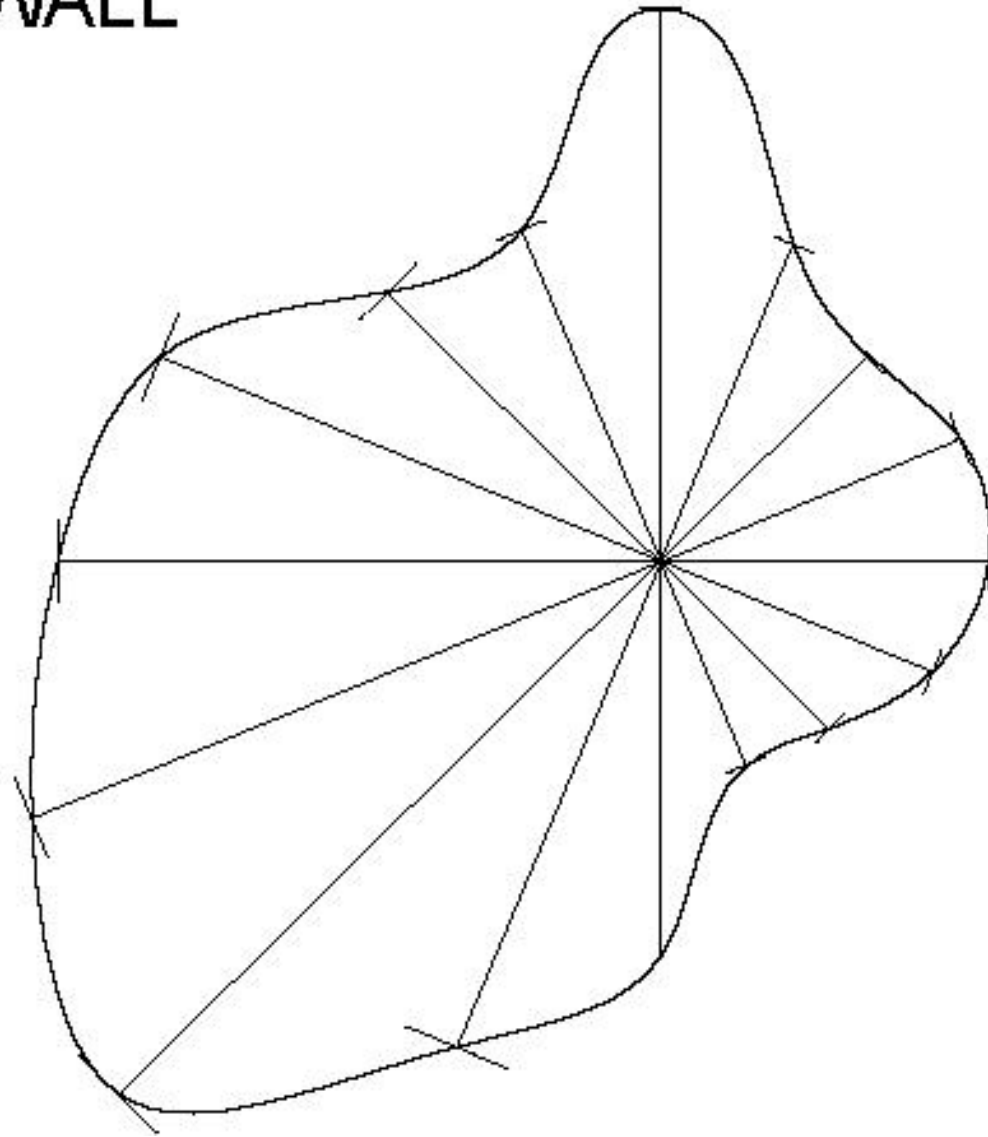


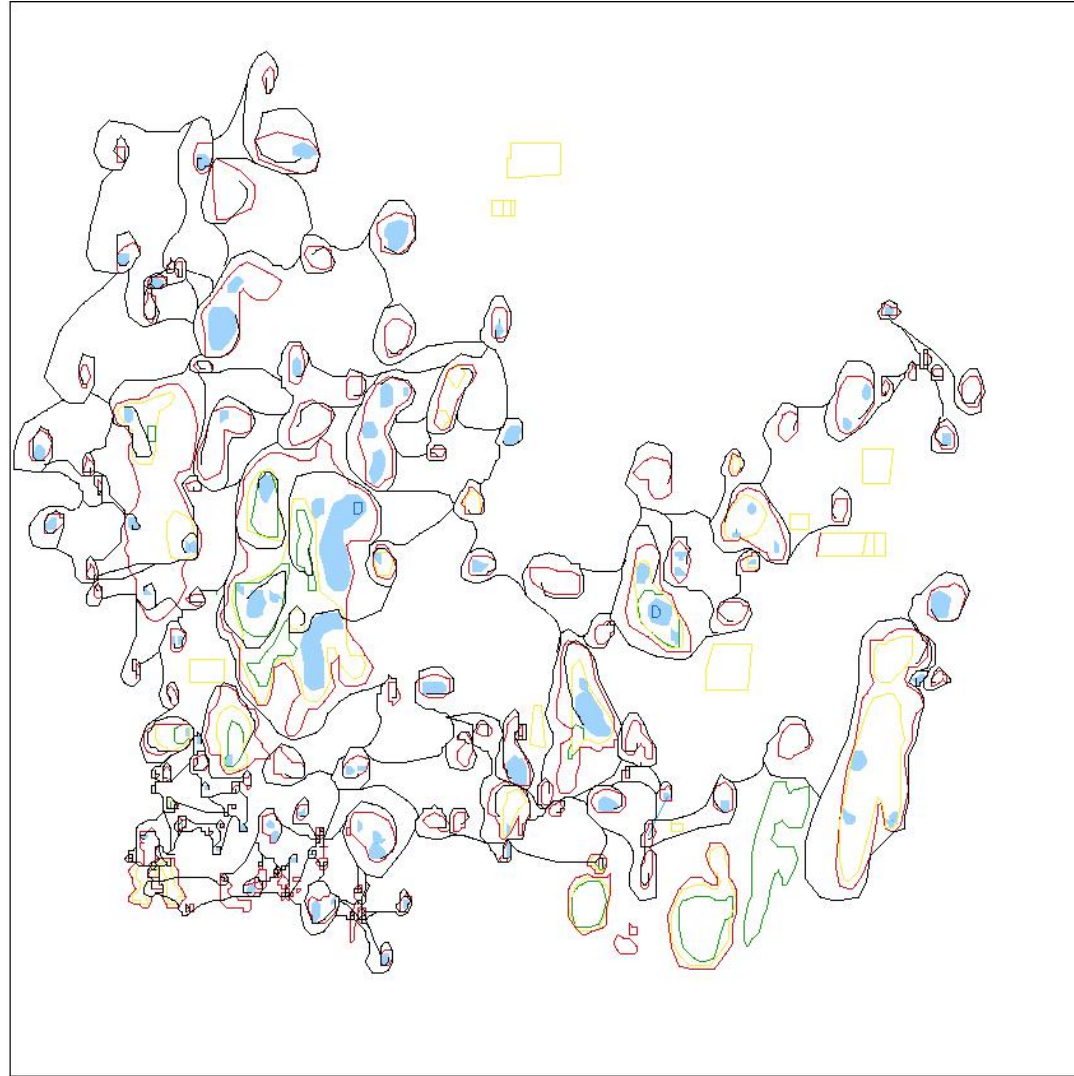
POROUS BARRIER

direction of prevailing wind



DUNE WALL

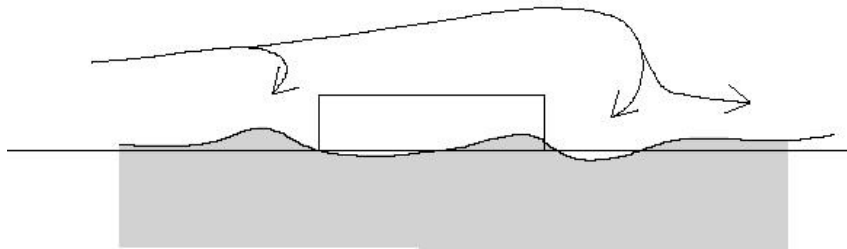




- Dune transportation system
connecting basins and sources

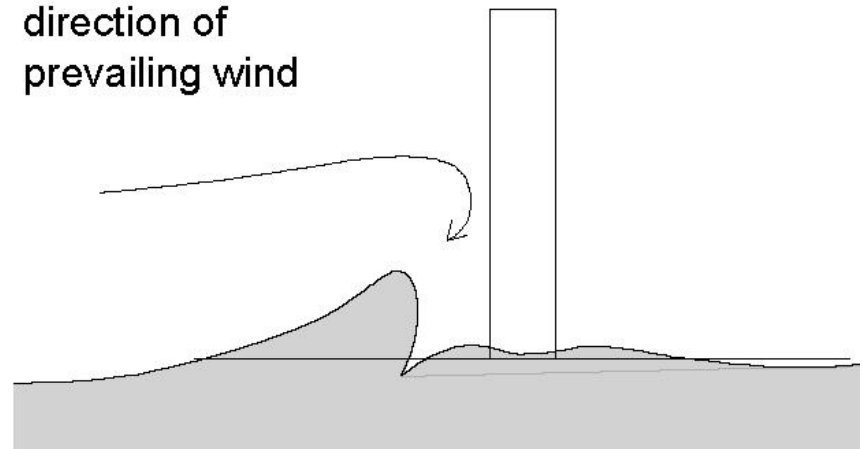
HORIZONTAL OBSTACLE

direction of
prevailing wind



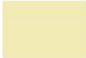
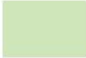

VERTICLE OBSTACLE

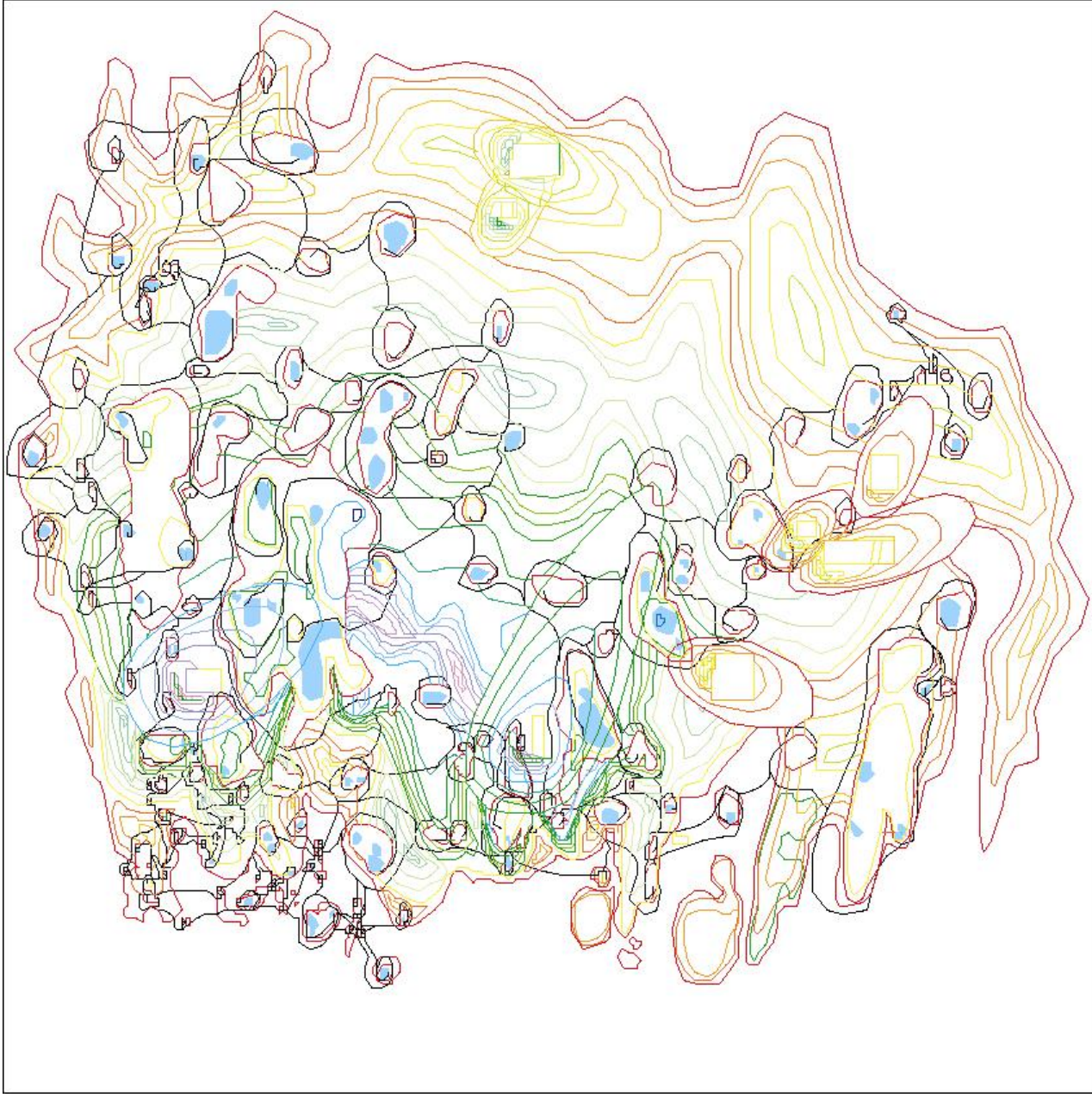
direction of
prevailing wind





- Dune formation of 9 historic buildings

-  : small agrarian
-  : forest
-  : nomadic, temporary (edges)





- Accomodation for new growth through additional dune transport networking to redistribute or densify existing dunes.

